



# SHEPHERD OF THE HILLS LUTHERAN CHURCH

CALLED . . .

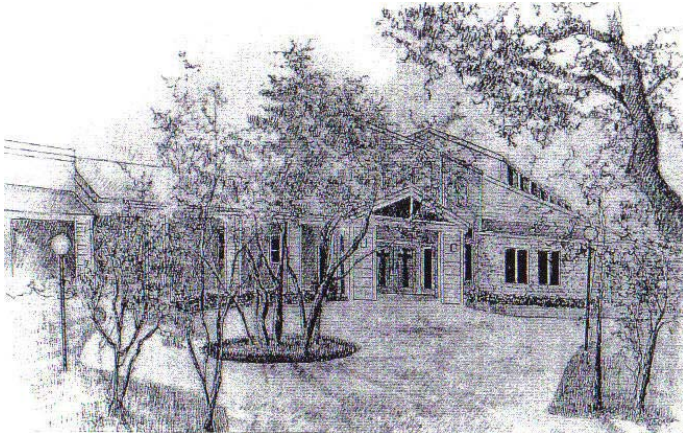
EMPOWERED . . .

SENT . . .

“Called through the Gospel to be a nurturing, dynamic community, celebrating God’s presence in our lives, and sharing with all God’s abundant grace in Jesus Christ”

APRIL 28, 2010  
VOLUME 35, No. 9

## **33<sup>RD</sup> ANNIVERSARY CELEBRATION** **SUNDAY, MAY 16, 2010**



- ◆ **WORSHIP** At 8:30 and 11:00 am we will have services of **Holy Communion** and **Rededication of Lives**.
- ◆ **SPECIAL ANNIVERSARY OFFERING** As a way to celebrate our 33<sup>rd</sup> Anniversary as a congregation of the Evangelical Lutheran Church in America, your Church Council has designated a **special anniversary offering** to be received on May 16<sup>th</sup>. On this day we will receive special gifts to help our brothers and sisters of La Virgen del Rosario Lutheran Church in Aurora Ocho de Octubre, Guatemala build their new church. We hope to raise \$4,000 through this offering so that they will be able to purchase the structural steel and the first 1,000 cinder blocks for the exterior walls. As we have been blessed we seek to share that blessing with others. Please note “Anniversary Offering” on your check. Thank you for helping ‘build’ this house of worship!
- ◆ **FELLOWSHIP** At 3:00 pm we will gather at the home of Jim and Marie Fortune for our **Anniversary Fish Fry**. Come out at 3:00 for swimming in Barton Creek, games, and conversation. We will plan on eating at 6:00. Please bring an appetizer, salad, vegetable, or dessert to share. Fish, hush puppies, fries, and drinks will be provided. Maps to the Fortunes are available at the Welcome Center!

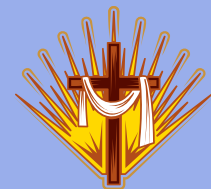
### WHEN YOU COME TO WORSHIP . . .

MORNING WORSHIP - 8:30 & 11:00  
YOUTH SUNDAY SCHOOL - 9:45 AM  
ADULT SUNDAY SCHOOL - 10:00 AM

SUNDAY, MAY 2  
**FIFTH SUNDAY OF EASTER**  
*The Celebration of Holy Communion* using *Now the Feast and Celebration*.  
The lessons will be: *Acts 11:1-18*; *Psalms 148*; *Revelation 21:1-6*; and *John 13:31-35*.

SUNDAY, MAY 9  
**SIXTH SUNDAY OF EASTER**  
The lesson will be: *Acts 16:9-15*; *Psalms 67*; *Revelation 21:10, 22-22:5*; and *John 14:23-29*.

SUNDAY, MAY 16  
**SEVENTH SUNDAY OF EASTER**  
**33<sup>RD</sup> ANNIVERSARY SUNDAY**  
*The Celebration of Holy Communion*.  
The lessons will be: *Acts 16:16-34*; *Psalms 97*; *Revelation 22:12-14, 16-17, 20-21*; and *John 17:20-26*.



**SPIRIT IN THE HILLS  
LUTHERAN CHURCH**  
SUNDAY WORSHIP - 9:30 AM  
BRIARCLIFF COMMUNITY CENTER

[[www.spiritinthehills.org](http://www.spiritinthehills.org)]

## FROM MY POINT OF VIEW . . .

*The following Point of View was written by congregational member, Jan Burnight.*

Dear Friends at Shepherd of the Hills,

For several months I have been communicating with the pastors about building a "Care Team". This would be a team of diverse individuals with a variety of life experiences. It would be the intention of the "Care Team" to help the Pastors in supporting our congregation members who are in need of care from their Christian community.

Each of us has an experience which we can draw from to help support a member of SOTH in need. Whether it's sitting in a surgical waiting room, visiting a shut in, delivering a meal as a congregation member heals or writing a note or card, we all can share our faith and love with individuals in need of care.

The initial goal in creating the "Care Team" is to help support our Pastors in their endless care giving roll as it pertains to SOTH. Occasionally, there are times when schedules do not permit the Pastors to be everywhere they are needed or requested. We can help them by making sure SOTH members know they are supported by a "Care Team" as well as receiving Pastoral care.

Part of caring for our congregation also means keeping in contact with our members. When a family is missed by "Care Team" members and the Pastors, it would be ideal if they received a caring call to check-in, sharing with them that they have been missed. If concerns are expressed that would need Pastoral support, the "Care Team" member would refer the Pastors to that particular family.

The "Care Team" can be an important part of the cohesive body of our congregation. Connections build strong relationships, strong relationships build strong congregations.

We all need to feel cared for and loved during difficult times. God has given each of us a gift to share with other members of our congregation who are in need.

Some of you have already expressed an interest in participating in the "Care Team". If you have not heard about this new ministry and you are interested let me know. I will contact you with more information.

Your Sister in Christ,

Jan Burnight

[512] 892-1984 Home

[512] 695-0067 Cell

jmaryb@austin.rr.com



## BACCALAUREATE SUNDAY, MAY 30, 5:00 PM

Shepherd of the Hills, along with other churches in the Westbank, is co-sponsoring a multi-faith **Baccalaureate Ceremony** for all graduating seniors. The worship service will be Sunday, May 30, 5:00 pm, at Riverbend Church, 4214 North Capital of Texas Highway. Questions? Contact Rebecca Guengerich [327-3370, rebecca@shephills.org].



## WITHIN THE FOLD

### DEATH

Our thoughts and prayers surround **Amy Ruedas**, Director of Child and Family Ministry, upon the death of her cousin.



### "PRAY & PUTT" GOLF FELLOWSHIP

Members and friends are invited to a **day of golf** Thursday May 20<sup>th</sup> at The Hills [\$69 per person]. The May tee times will be around 10 am. Contact Jerry Schmeil [jvschmeil@aol.com, 261-3404] to make your reservation.

### LENT/EASTER OFFERING

Thank you so much for sharing during the **Lenten/Easter** season! \$10,815.00 was received through our special offerings and this amount will be shared among Caritas [social service agency in Austin] and Lutheran World Relief. Well Done!

### MEN'S BREAKFAST SATURDAY, MAY 8, 8:00 AM

Breakfast provided by  
Harold Hervig and Bob Vorkoper



### SYNOD NEWSLETTER. . . THE VISTA

The April issue of **The Vista** is available ONLY on-line at [www.swtsynod.org/newsevents](http://www.swtsynod.org/newsevents).

### BUTTERFLY CHRISTIAN PRESCHOOL ACCREDITATION VISIT



We welcome to Shepherd of the Hills and to the Butterfly Christian Preschool, the **accreditation team from ELEA** [Evangelical Lutheran Education Association] beginning Sunday, May 2 through Tuesday, May 4. These visitors will have the opportunity to see the face of God in each of our students. Thank you to Preschool Director, Karon Hammond, and all of her staff, for all they do to enrich the lives of these children.

**CHURCH OFFICE CLOSED**  
**MONDAY, MAY 31**  
**IN OBSERVANCE OF MEMORIAL DAY**





# THE AUSTIN UNEMPLOYMENT GROUP

The **Austin Unemployment Group** [AUG] which is designed for the unemployed, underemployed, and individuals considering a career change, will continue to meet the second and fourth Mondays of each month from 6:30 to 8:00 p.m. in the Fellowship Hall. The next meeting will be Monday, May 10 and the topic will be *Interviewing*. For a complete list of class topics visit the website at [www.austinunemploymentgroup.org] or contact Pastor Heidi Schwerdtfeger-Jones [heidi@shephills.org, 327-3370] or Rebecca Guengerich [rebecca@shephills.org].

## SAFE PLACE COLLECTION DRIVE

The Social Ministry Committee will sponsor a **collection drive for Safe Place** [a center for abused women and children] until May 30. Please stop by the display table and pick up a list of items needed [such as backpacks, diapers/pull ups, children and women's underwear, personal hygiene products including shampoo, deodorant, toothpaste and brushes, bath towels, wash clothes, bed pillows, grocery and gas gift cards. Please place donated items in the wooden box in the narthex. We will also accept monetary donations [make checks payable to Shepherd of the Hills]. Questions? Contact Norma Smith, Chair of the Social Ministry Committee [263-8498, smith.norma@sbcglobal.net]. Thank you!



## SPARK RELATIONSHIP WORKSHOP

On May 8<sup>th</sup>, 5:00 - 7:30 pm, we will host a **SPARK Relationship Workshop** which encourages couples to keep the spark in their marriage through the years. Charles Moody, chaplain with the Austin Police Department and Pastor of the R.O.C.K. church, along with Pastor Heidi Schwerdtfeger-Jones, will lead a session entitled "What planet is your spouse really from?". . a look at communication between men and women. The evening includes dinner and child care. Contact Amy Ruedas, Director of Child and Family Ministry [327-3370, amy@shephills.org] for more information or to RSVP for child care [by Wednesday, May 5].

## "TRUNK SALE". . .SATURDAY, MAY 15



Shepherd of the Hills will have a "**Trunk Sale**" [our version of a hip, trendy garage sale] on May 15<sup>th</sup>, 8:00 a.m. to noon, Rain or Shine. Reserve a parking slot [\$10] in the back parking lot to sell your unwanted clutter and help support the Capital Area Food Bank. The reservation fee will go to the Food Bank and individuals may keep the profits from their own sales. Registration forms are available in the notebook in the Narthex, or contact Rebecca Guengerich [rebecca@shephills.org; 327-3370]. Please note that the deadline to reserve a space is May 9<sup>th</sup>. If you would like to help with this event, contact Kara Buesnel [301-0655]. In addition to selling your items, you can extend gracious hospitality to our neighbors, telling them about the wonderful things God is doing in this place.



## VINTAGE FRIENDS SERVICE PROJECT

With world hunger at a critical stage, an appropriate service project for the **Vintage Friends** [retired members and friends] is another visit to the Capitol Area Food Bank for volunteer service, as we did last year. We have a spot reserved for us on Thursday, May 20, at 9:00 a.m. There will be a chance to sign up soon in the notebook on the credenza to participate in this service project.

## THRIVENT FINANCIAL FOR LUTHERANS PRESENTS LUTHERAN NIGHT AT THE DELL DIAMOND



All members and friends are invited to an evening of fellowship at the ballpark Monday, June 21<sup>st</sup>, 7:05 pm for a **Round Rock Express baseball game** vs. Omaha Royals. Thrivent Financial for Lutherans will host a tailgate gathering from 5:30 - 6:45 pm. Tickets are \$6.00 and must be ordered by Friday, June 9. Forms to order your ticket are available in the narthex. See you at the game!!


## YOUTH MINISTRY MAY HIGHLIGHTS



### ☺ Pre K - 5<sup>TH</sup> GRADE YOUTH

- ✓ Saturday, May 10  
10:00 am Kickball and lunch with *Community New Start* youth [Pickle Elementary]
- ✓ Sunday, May 9  
9:45 am 1<sup>st</sup> & 2<sup>nd</sup> Grade Milestone *The Lord's Prayer* - Pastor Heidi will visit during Sunday School and lead youth through the Lord's Prayer.

### ☺ 8<sup>TH</sup> GRADE YOUTH

- ✓ Saturday, May 22  
9:30 Confirmation Breakfast and Rehearsal
- ✓ Sunday, May 23  
11:00 Rite of Confirmation 
- ✓ Sunday, May 23  
6:00 Introduction to Meeting-In-Home [M-I-H] [Dellagiacom]

### ☺ 9<sup>TH</sup> - 12<sup>TH</sup> GRADE YOUTH

- ✓ Each Sunday evening our 9<sup>th</sup>-12<sup>th</sup> grade youth either Meet-In-Homes [M-I-H] or at the church beginning at 6:00 pm for fellowship, dinner, and study together.
- ✓ Sunday, May 2  
5:07 pm Boundary Waters Canoe Area meeting for ALL participants, followed by M-I-H [Church].
- ✓ Sunday, May 2  
6:00 pm Meeting-In-Home [M-I-H] [Church]
- ✓ Sunday, May 9  
No M-I-H [Happy Mothers' Day]
- ✓ Sunday, May 16  
See you at the Fish Fry 
- ✓ Sunday, May 23  
6:00 pm [M-I-H] [Dellagiacom]
- ✓ Sunday, May 30  
6:00 pm [M-I-H] [Flint]

\*\*\*\*\*  
 ☆ **VACATION BIBLE SCHOOL**   
 ☆ **REGISTRATION CONTINUES!!!**  
 ☆ Pick up registration forms in the  
 ☆ Narthex for this year's VBS,  
 ☆ June 21 - 25  
 ☆ 9:00 am - 12:00 pm  
 ☆\*\*\*\*\*



SHEPHERD OF THE HILLS LUTHERAN CHURCH  
3525 BEE CAVE ROAD  
AUSTIN, TEXAS 78746



NON PROFIT ORG  
U.S. POSTAGE PD.  
AUSTIN, TEXAS  
PERMIT NO. 188

---

### SHEPHERD OF THE HILLS STAFF

Stephen M. Youngdahl, <i>Pastor</i>	❖	Heidi Schwerdtfeger-Jones, <i>Pastor</i>
Merle G. Franke, <i>Pastor</i>	❖	Rebecca Guengerich, <i>Christian Growth &amp; Spiritual Director</i>
Kevin McClure, <i>Music</i>	❖	Mark Dellagiacoma, <i>Youth and Family</i>
Vernon Moeller, <i>Organist</i>	❖	Amy Ruedas, <i>Child and Family</i>
Lisa Schaffer, <i>Administrative Assistant</i>	❖	Trixi Spinelli, <i>Financial Officer</i>
Mary Gimenez, <i>Building Manager</i>	❖	Karon Miller Hammond, <i>Preschool Director</i>
Lois Bilbrough, <i>Technical Support</i>	❖	Morris Janitorial, <i>Custodian</i>

**PHONE:** (512) 327-3370 ❖ **FAX:** (512) 327-6021 ❖ **WEB SITE:** [www.shephills.org](http://www.shephills.org)  
**E-MAIL:** CHURCH - [sheep@shephills.org](mailto:sheep@shephills.org) ❖ STAFF - (first name)@shephills.org

*Good News* FOR MAY 2010

Come to me, all you that  
are weary and are carrying  
heavy burdens, and I will  
give you rest.

— Matthew 11:28

SHEPHERD OF THE HILLS LUTHERAN CHURCH