



# SHEPHERD OF THE HILLS LUTHERAN CHURCH

CALLED . . .

EMPOWERED . . .

SENT . . .

“Called through the Gospel to be a nurturing, dynamic community, celebrating God’s presence in our lives, and sharing with all God’s abundant grace in Jesus Christ”

JUNLY 28, 2010  
VOLUME 35, No. 15

## 2010 HIGH ADVENTURE TRIP “KIDS IN CANOES”

July 8<sup>th</sup>-17<sup>th</sup> seventeen youth and six adults from Shepherd of the Hills went on our **Annual Senior High, High Adventure Trip to the Boundary Waters Canoe Area in Northern Minnesota** experiencing the beauty of nature, from lakes with water so clean you can drink straight out of them, to loons circling canoes and bald eagles flying around campsites. For devotions during the trip, the group focused on the parables of Jesus from the Gospel of Luke. It was amazing how those parables spoke to the travelers each day. Throughout the trip the participants grew in their relationships with God, each other, and themselves. For more on the trip, read this issue’s *Point of View* by Mark Dellagiacom, our Director of Youth and Family Ministry.



### WHEN YOU COME TO WORSHIP . . .

MORNING WORSHIP - 8:30 & 11:00  
YOUTH SUNDAY SCHOOL - 9:45 AM  
ADULT SUNDAY SCHOOL - 10:00 AM

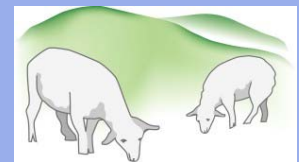
### SUNDAY, AUGUST 1 TENTH SUNDAY AFTER PENTECOST

*The Celebration of Holy Communion* using *Now the Feast and Celebration*.  
The lessons are: *Ecclesiastes 1:2, 12-14; 2:18-23; Psalm 49:1-11; Colossians 3:1-11; and Luke 12:13-21.*

### SUNDAY, AUGUST 8 ELEVENTH SUNDAY AFTER PENTECOST

The lessons are: *Genesis 15:1-6; Psalm 33:12-22; Hebrews 11:1-3, 8-16; and Luke 12:32-40.*

SUNDAY, AUGUST 15  
MARY, MOTHER OF OUR LORD  
*The Celebration of Holy Communion.*  
The lessons are: *Isaiah 61:7-11; Psalm 45:11-16; Galatians 4:4-7; and Luke 1:46-55.*



SPIRIT IN THE HILLS  
LUTHERAN CHURCH  
SUNDAY WORSHIP - 9:30 AM  
BRIARCLIFF COMMUNITY CENTER

[[www.spiritinthehills.org](http://www.spiritinthehills.org)]

## FROM MY POINT OF VIEW . . .

*The following Point of View was written by  
Mark Dellagiacom, Director of Youth and Family Ministry.*

Of the 10 day high adventure trip half of it is spent traveling to and from Minnesota. This year it was awesome to see 17 high school youth get on a bus at 6:00 am and by the time we reached Kansas City twelve hours later realize that they were building lasting friendships with people they had just met that morning. Building those kinds of bonds doesn't usually happen until we get into the wilderness in smaller groups.

For our journey through the Boundary Waters we were divided into three groups as the maximum group size is nine individuals. Each group had to work together as a team to accomplish many tasks that included cooking, cleaning, gathering fire wood, building fires, setting up tents, fetching water, and many other tasks. To get between lakes we have to walk between the lakes on portages with all of our gear carrying our canoes, food bags, tent bags, paddles, and life jackets. While some portages were short and on level, dry ground, others were very long with steep rocky inclines and muddy trails. It takes teamwork to get all of our stuff through a portage in one trip. It is always a great thing to see individuals push themselves for the team during portages. Some may try to carry 2 or 3 things. For example, some would carry 2 packs and a canoe while others might carry 1 very heavy pack and paddles. It is an amazing show of support and teamwork to see people, once they finish a portage with their own load, return down the trail, often running, to check on the rest of the group to see if anyone needed help with the load they are carrying. Taking a heavy bag or canoe from someone who is very tired to help them out is a great feeling. When someone comes back to help you when you are struggling with a heavy bag or canoe is also a great feeling.

Besides the physical help, the emotional support that is given among people is a pretty amazing thing to experience too. Encouraging words, high fives, songs, and laughter are an integral part of this experience. Many of the people on this trip pushed themselves in ways they had never imagined and accomplished goals they had set for themselves. As one of our youth said, *"I have travelled a lot and been to several beautiful places, but never have I seen anything like the Boundary Waters. I picked a great first camping trip."* I encourage you to talk with the youth who went on this trip about their experiences.



## WITHIN THE FOLD

### BAPTISM

The Sacrament of Holy Baptism was celebrated on July 25 for **Finley Teagan Peterson**, daughter of Jeff and Cheryl Peterson. Finley's sponsors were Audrey Young and Emilie Rupp



### MEN'S BREAKFAST SATURDAY, AUGUST 14

Men of the congregation are invited to attend **Men's Breakfast** Saturday, August 14, 8:00 am in the Multi-Purpose Room. Breakfast will be provided by Fred Schleede and James Parks. Join in the fellowship!



### "PRAY & PUTT" FELLOWSHIP THURSDAY, AUGUST 19

Join us for a day of fellowship to **"pray and putt"** at the Onion Creek Golf Club on Thursday, August 19 with the first tee time at 9:15 am. Cost is \$35 per person [includes green fees, cart, balls]. To participate, RSVP to Jerry Schmeil [jvschmeil@aol.com, 261-3404] by August 17.

### CHRIST RENEWS HIS PARISH [CRHP] RENEWAL WEEKENDS

◆ **MEN:** October 16 & 17

◆ **WOMEN:** November 6 & 7



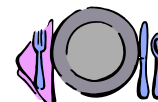
**Christ Renews His Parish [CRHP]** is an adult women's or men's renewal weekend that helps to bring congregation members together. What does CRHP do? CRHP activates, stimulates, motivates, reconciles, heals, liberates, involves, and invites us to seek Jesus personally in our life. How does CRHP do this? It does this through communion, God's word, shared faith, prayer, ministry and discipleship. CRHP's purpose at Shepherd of the Hills is to continue to build a Christ centered, Spirit empowered congregation.

## ALL COMMITTEE NIGHT RESUMES

TUESDAY, AUGUST 17

6:30 PM - DINNER IN THE MULTI-PURPOSE ROOM

7:00 PM - COMMITTEES MEET



# SHEPHERD OF THE HILLS FAMILY FELLOWSHIP AT THE DELL DIAMOND



All members [young and old] are invited to an evening of fellowship at the ballpark Sunday, August 8<sup>th</sup> at 6:05 pm for a **Round Rock Express baseball game**. Tickets are \$11.00 Please reserve your ticket by Wednesday, August 4, then pay Mark Dellagiacomia [mark@shephills.org, 327-3370] or Amy Ruedas [amy@shephills.org, 327-3370]. See you at the game!!



## VINTAGE FRIENDS ICE CREAM SOCIAL THURSDAY, AUGUST 19, 7:30 PM

As a kick-off for its fall and winter programs, the **Vintage Friends** [retired members and friends] will hold an **Ice Cream Social** on Thursday, August 19, 7:30 pm at the home of Bernie and Phyllis Aken. Questions or directions? Contact Pastor Merle Franke [452-0414].



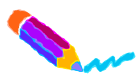
## BREAKFAST FOR THE HOMELESS

Shepherd of the Hills is responsible for **preparing** [August 30, 5:30 pm], and **servicing** [August 31, 5:30 am] **breakfast for the homeless** this month at First Methodist Family Center downtown [maps are available in the Narthex].



## YOUTH AND FAMILY COMMITTEE ANNOUNCEMENTS

- ➔ The Youth and Family Ministry Committee would like to encourage anyone with a love of live contemporary Christian music to join us in our **Fall Concert Series**. Please save the following dates for future Christian Concerts: Thursday, October 7<sup>th</sup> - *Make a Difference Tour 2010* at the Frank Erwin Center featuring Max Lucado, Michael W. Smith, Third Day and TobyMac; and Friday, November 5<sup>th</sup> - *Jars of Clay*, 7:00 pm at Grace Covenant Church, Austin.
- ➔ **Parents' Lunch** - All parents and youth in grades 9-12, are invited to a lunch in the Multi-Purpose Room Sunday, August 29<sup>th</sup> at 12:15 pm. We will gather after the late service for a meal served by the youth, then we will discuss the upcoming events for the 2010-2011 school year. This event is a great opportunity for adults and youth to get involved in youth ministry at Shepherd of the Hills. For more information, or to RSVP for the lunch, please contact Mark [327-3370, mark@shephills.org].
- ➔ This fall we will continue our partnership with **Community New Start** by playing **kickball** with their youth at Pickle Elementary on the third Saturday of each month. We will leave the church in the bus at 9:30 and return by 12:30, or you can meet us at Pickle Elementary at 10:00 am. Our time with the youth involve many activities including: kickball, foursquare, pushing children on swings, and providing lunch. Everyone is welcome: youth, adults, families. For more information contact Mark Dellagiacomia [mark@shephills.org, 327-3370] or Amy Ruedas [amy@shephills.org, 327-3370].

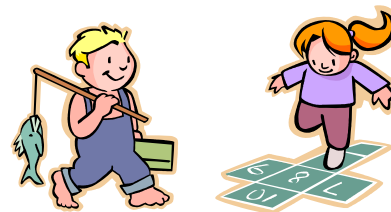


## SCHOOL SUPPLIES FOR EAGLE PASS



We continue to receive **school supplies for the children** of our Mission Partner congregations in **Eagle Pass and Piedras Negras**. Donated items may be placed in the bin in the narthex or you may make a donation marked 'school supplies' and items will be purchased for you. On Saturday, August 14, we will have a one day mission trip to Eagle Pass to deliver the supplies. The church buss will leave at 8:30 am and return by 7:00 pm. If you are interested In attending or have more questions please contact Mark Dellagiacomia [mark@shephills.org, 327-3370] or Amy Ruedas [amy@shephills.org, 327-3370].

## YOUTH MINISTRY AUGUST HIGHLIGHTS



### PRE K - 5<sup>TH</sup> GRADE YOUTH

- ✓ Sunday, August 8  
6:05 pm Family Fellowship to Round Rock Express Game
- ✓ Saturday, August 14  
8:00 am Family Mission Day Trip to Eagle Pass to deliver school supplies
- ✓ Tuesday, August 17  
9:00 am *Parent Share* playdate at Circle C [Metro Park]

### ☺ 6<sup>TH</sup> - 8<sup>TH</sup> GRADE YOUTH

- ✓ Sunday, August 8  
6:05 pm Family Fellowship to Round Rock Express Game
- ✓ Saturday, August 14  
8:00 am Family Mission Day Trip to Eagle Pass to deliver school supplies

### ☺ 9<sup>TH</sup> - 12<sup>TH</sup> GRADE YOUTH

- ✓ Sunday, August 1  
6:00 pm M-I-H [Meeting-In-Home] [Zimmermann @ Western Oaks Pool]
- ✓ Sunday, August 8  
6:05 pm Family Fellowship to Round Rock Express Game
- ✓ Saturday, August 14  
8:00 am Family Mission Day Trip to Eagle Pass to deliver school supplies
- ✓ Sunday, August 15  
6:00 pm M-I-H [Meeting-In-Home] [Spillar @ Rollingwood Pool]
- ✓ Sunday, August 22  
6:00 pm Dinner and Service of Blessing for the School Year [Church]
- ✓ Sunday, August 29  
12:15 Parents' Lunch [Church]





SHEPHERD OF THE HILLS LUTHERAN CHURCH  
3525 BEE CAVE ROAD  
AUSTIN, TEXAS 78746



NON PROFIT ORG  
U.S. POSTAGE PD.  
AUSTIN, TEXAS  
PERMIT NO. 188

---

### SHEPHERD OF THE HILLS STAFF

Stephen M. Youngdahl, <i>Pastor</i>	❖	Heidi Schwerdtfeger-Jones, <i>Pastor</i>
Merle G. Franke, <i>Pastor</i>	❖	Rebecca Guengerich, <i>Christian Growth &amp; Spiritual Director</i>
Kevin McClure, <i>Music</i>	❖	Mark Dellagiacoma, <i>Youth and Family</i>
Vernon Moeller, <i>Organist</i>	❖	Amy Ruedas, <i>Child and Family</i>
Lisa Schaffer, <i>Administrative Assistant</i>	❖	Trixi Spinelli, <i>Financial Officer</i>
Mary Gimenez, <i>Building Manager</i>	❖	Karon Miller Hammond, <i>Preschool Director</i>
Lois Bilbrough, <i>Technical Support</i>	❖	Morris Janitorial, <i>Custodian</i>

**PHONE:** (512) 327-3370 ❖ **FAX:** (512) 327-6021 ❖ **WEB SITE:** [www.shephills.org](http://www.shephills.org)  
**E-MAIL:** CHURCH - [sheep@shephills.org](mailto:sheep@shephills.org) ❖ STAFF - (first name)@shephills.org

*Good News* FOR AUGUST 2010

**We know that all things  
work together for good  
for those who love God.**

— *Romans 8:28*

SHEPHERD OF THE HILLS LUTHERAN CHURCH